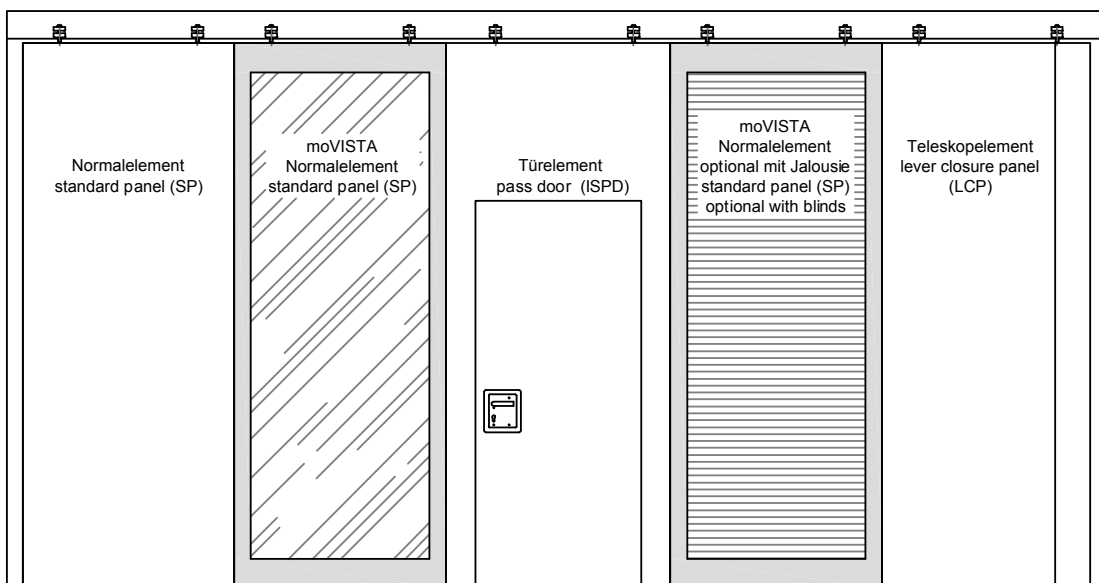
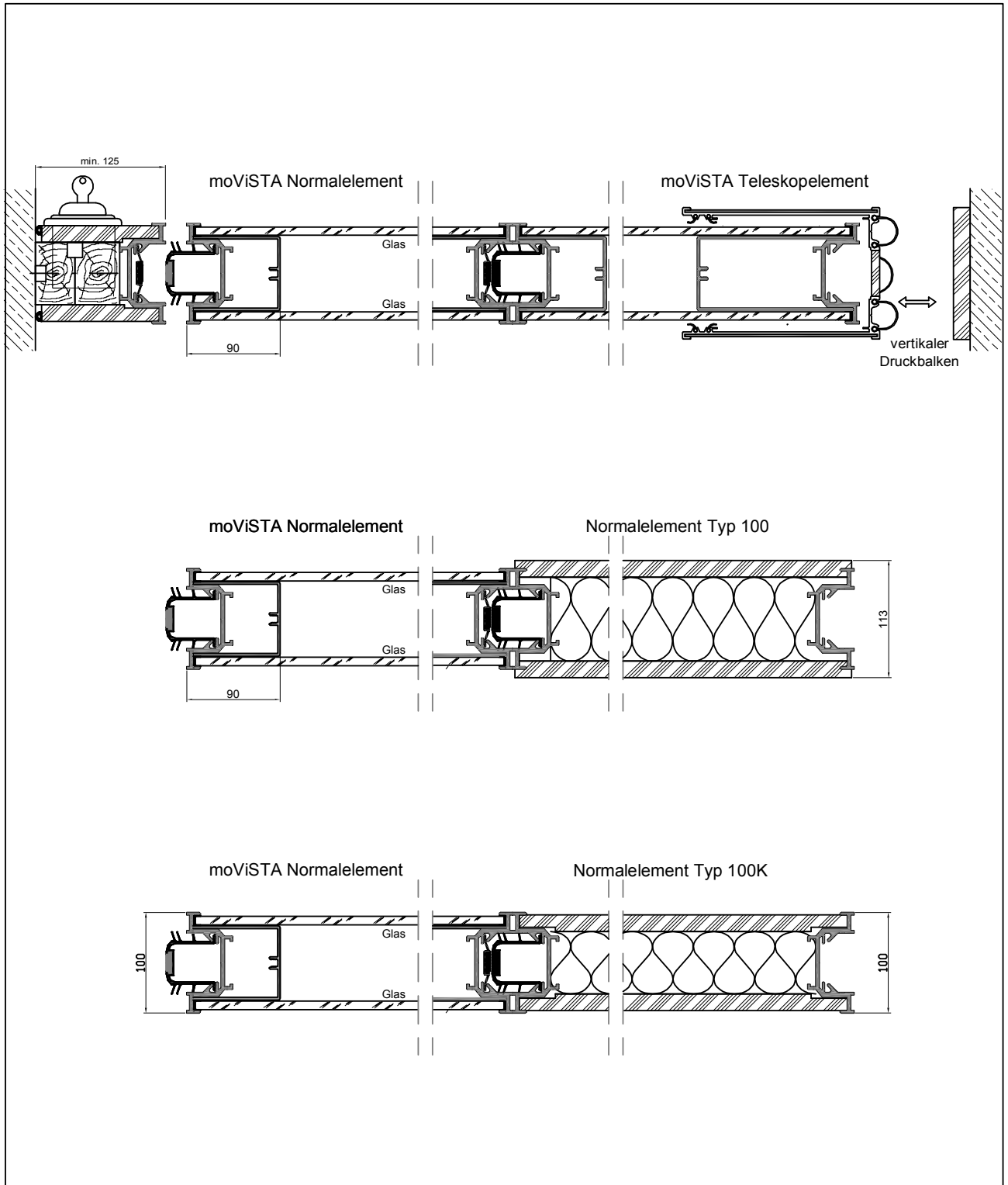
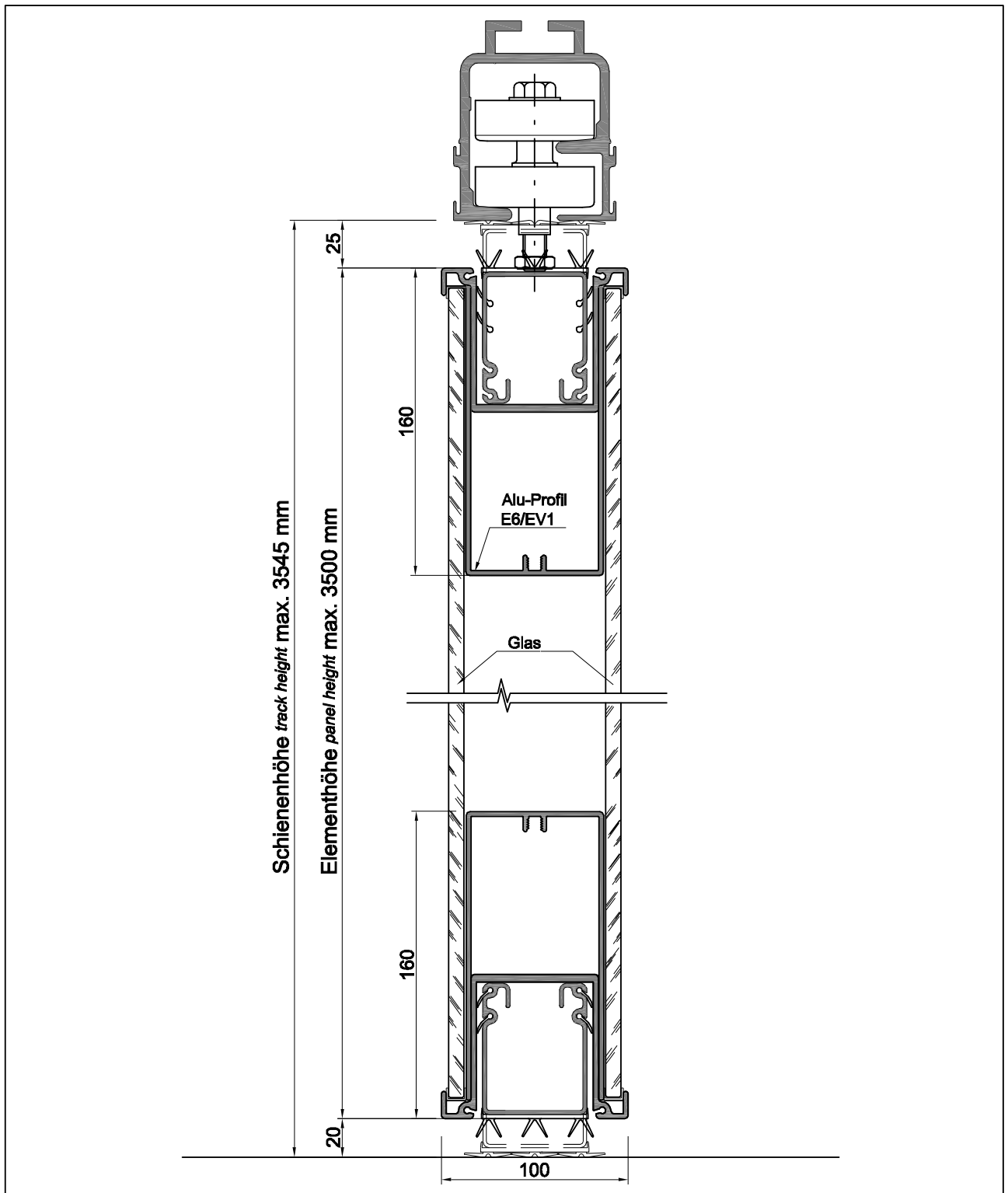


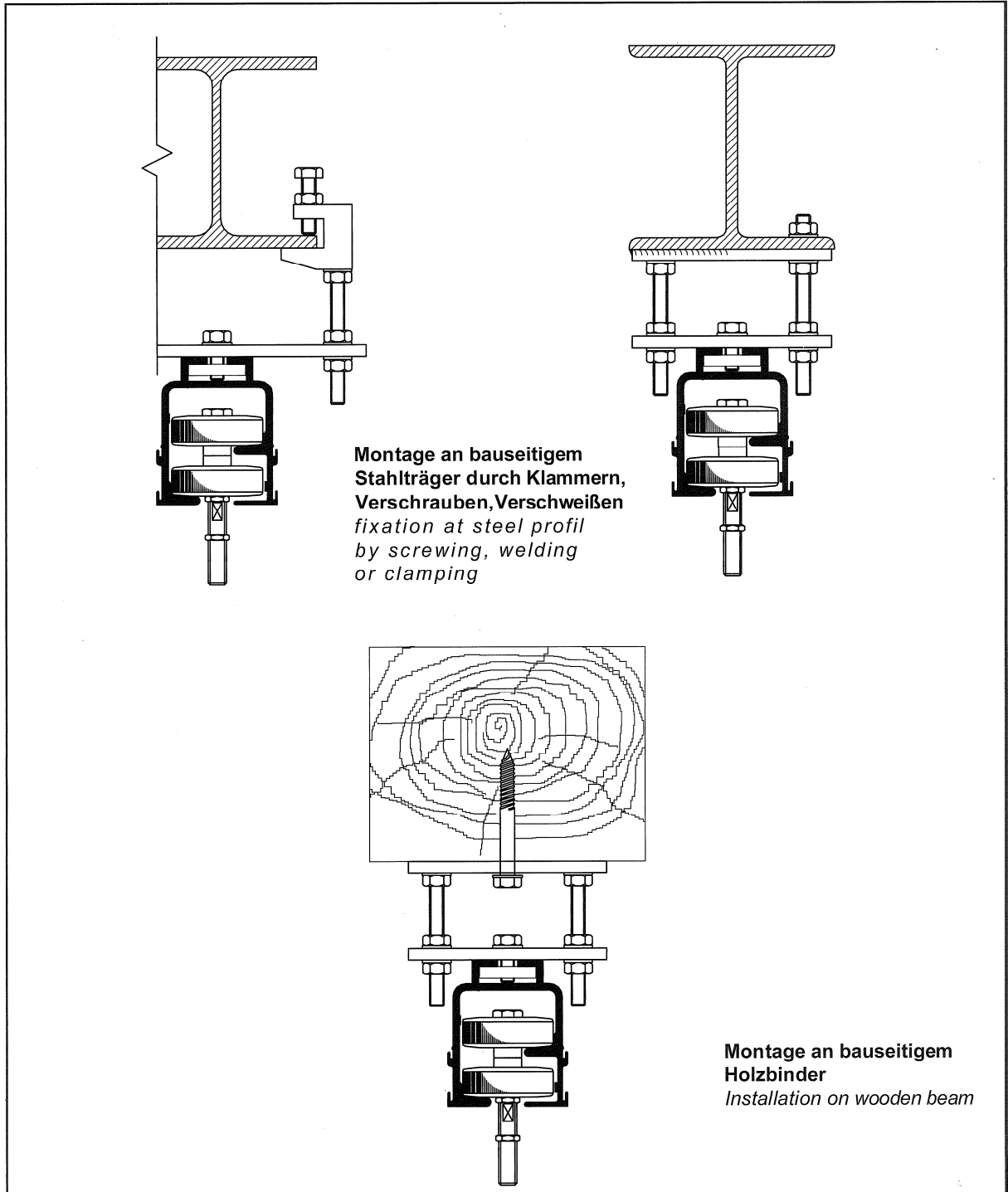
Elementhöhe moViSTA-Elemente max. 3500 mm
panel height moViSTA panels max. 3500 mm



moViSTA-Elemente in Kombination mit Vollwandelementen Typ 100 oder 100K
moViSTA panels in combination with standard panels Typ 100 or 100K







HUFCOR Deutschland GmbH

Triftweg 34 06847 Dessau-Roßlau

Phone: +49 340 540796-0

Fax: +49 340 540796-28

www.hufcor.de

NEW: moViSTA



HUFCOR moViSTA

The new generation in the technology of movable walls,
Combines bright and wide transparency with high sound performance.

moViSTA - with automatic locking of the panels (ESS)

moViSTA - optional with blind – all functions are remote controlled

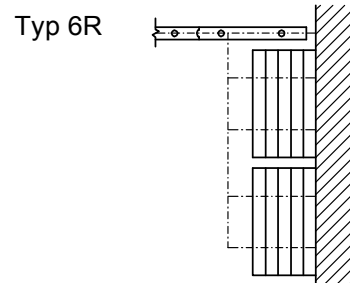
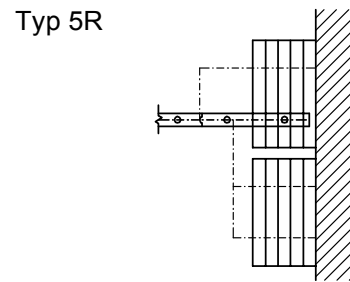
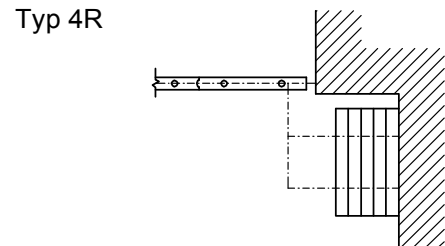
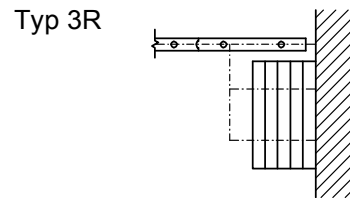
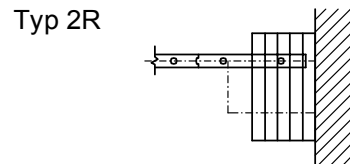
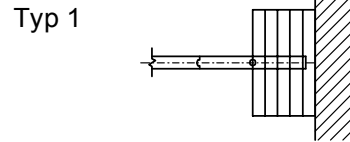
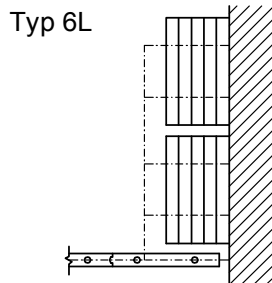
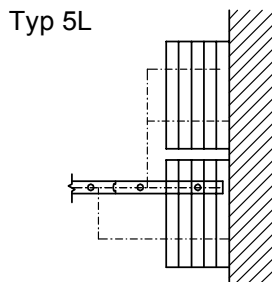
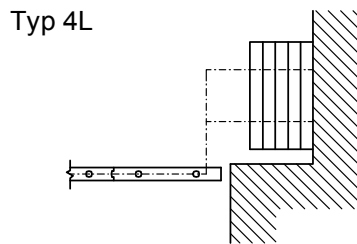
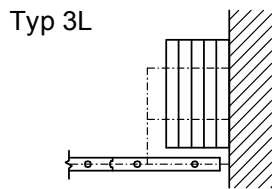
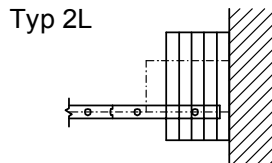
moViSTA - combined with full wallpanels and passdoors

moViSTA - certified sound protection DIN EN ISO 717-1 up to RwP 47 dB



Optional with blind

**Typ 5 aus Schallschutzgründen
nur bei Glasanlagen empfohlen**
*type 5 only for glass partitions
because of sound value*



HUFCOR Deutschland GmbH

Triftweg 34 06847 Dessau-Roßlau

Phone: +49 340 540796-0

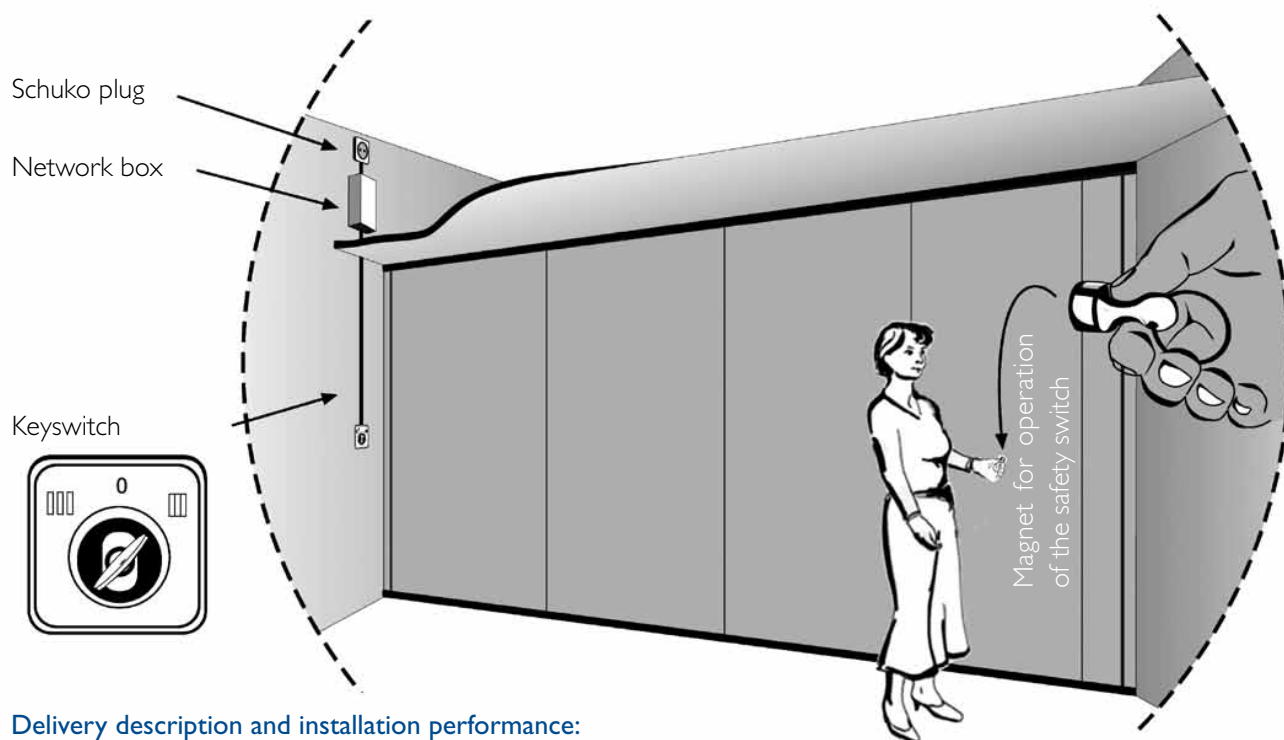
Fax: +49 340 540796-28

www.hufcor.de

Technical description

The product alternative ESS is a highly developed, microprocessor-driven operation of the seals. You receive our partitions in product alternative ESS as a turnkey service. The certified electronic pilot controls the function of the wall panels. Our ESS has passed an electromagnetic compliance test (EMV) for industrial and living areas and is provided with the CE sign.

Our company is certified by TÜV in compliance with the new DIN EN ISO 9001:2008. Our products are tested by TÜV according to DIN 31000 and the production is controlled by TÜV at regular intervals.



Delivery description and installation performance:

- ESS Module per wall panel – each module is driven by a microprocessor – The motors are „made in Germany“
- Emergency operation through battery (in case of power failure) as well as manual emergency operation.
- Magnet for operation of the safety switch
- Network box (Size: 200 x 300 x 155)
- Keyswitch
- Laying of the cable and connection to the main site installation

Performances on site:

- You determine with the support of our distributor the position of the network box, the Schuko plug and the keyswitch
- Schuko plug 230V (Recommendation: near to the network box)
- Design box for keyswitch with a two-core cable (2,5 mm²) to the network box
- Two-core cable (2,5 mm²) from the wall jamb to the keyswitch

Technical description

If the works on site are not yet executed at the time of the track installation, our trained distributor will determine, in agreement with the site management, the position of the network box and of the keyswitch and will install these parts. In case an agreement also at the time of installation is not possible, the materials will be installed in a perimeter of 2 meter from the wall jamb. A final hand-over and set-up will happen at the time of the panels installation.

ESS the new customer friendliness:

The locking of the panels through the ESS Module will happen after the set-up of the first panel against the wall jamb. The facing contacts ensure the low tension and the power impulse to the panel. The horizontal seals extend automatically. During the locking process, the user can already pull the next panel from the storage and then connect it to the already locked panel. By this way, each element is positioned after each other. The last panel, the lever closure panel, is set up through a specially developed safety switch. The vertical seal is extended with the help of a magnet kept in the area, in front of a marked contact point. The locking of the seal can at any time be interrupted by taking the magnet away from the contact point. This safety switch is very important particularly for movable walls in schools and kindergardens.

The opening of the wall is done in reversed order.

Have a lot of fun with the new generation of movable walls technique from HUFCOR!

Please pay also some attention to our new product moVISTA. The moVISTA ESS combines bright transparency with high sound protection and is of course equipped with the automatic seal locking system

